

Figure 1-figure supplement 2-source data 1: Different amounts of human muscle total are blotted with Junctophilin abA as presented in supplement figure 2 for Fig. 1

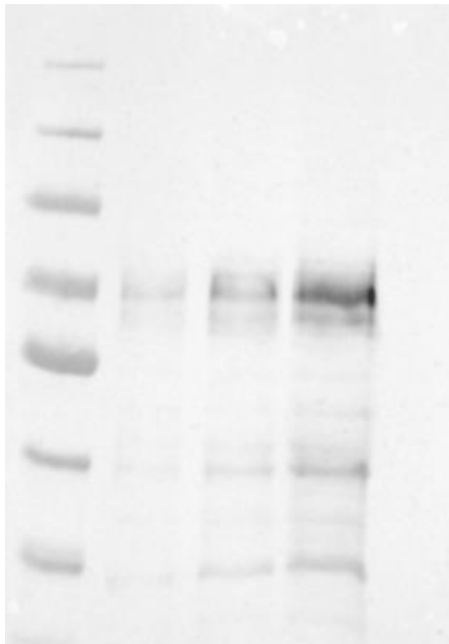


Figure 1-figure supplement 2-source data 2: Different amounts of human muscle total are blotted with Junctophilin abB as presented in supplement figure 2 for Fig. 1

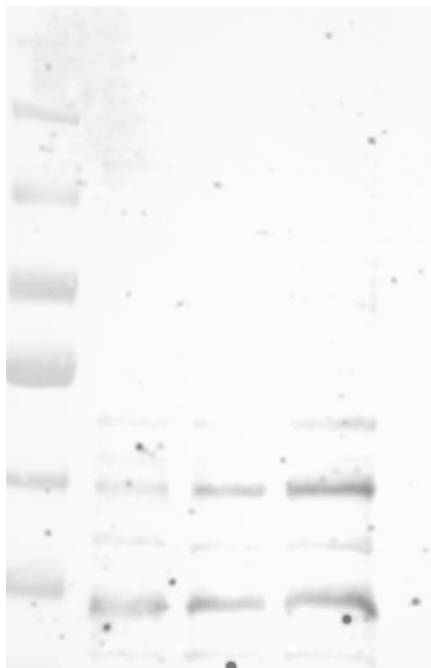


Figure 1-figure supplement 2-source data 2: Above blots are derived from following ponceau stain normalizing blot. Junctophilin abA blot is obtained from the left part of following ponceau stain membrane and Junctophilin abB blot is obtained from right part of the membrane.

